

Rows Plan 2 - A TruFlex Design

ROWS AT ZEST



PRICE
\$721,400

FEATURES

-  1 Bedrooms
-  1 Bathrooms
-  1,672 Sq. Ft.
-  2 Car Garage

There's a lot to love with Plan 2's beautifully designed floor plan offering 1,705 sq. ft of living space. A two-car garage connects to a convenient first-floor den or secondary bedroom and ensuite bathroom. Head upstairs to the main living area and find the expansive great room, contemporary kitchen, and dining area that leads out to a private deck. The gourmet kitchen is complete with a pantry, dual sinks and the option for a center preparation island. The kitchen includes full overlay, frameless flat panel contemporary maple cabinetry with knobs, granite slab kitchen countertops with your color choice of 6" backsplash, and GE stainless steel premium kitchen appliance package.

The third floor is customizable with plenty of options to meet families' differing needs. Add one to two secondary bedrooms or replace them with a larger primary bathroom and multi-functional flex room. Adjacent is the stunning primary suite, complete with a private balcony, walk-in closet and a spa-like bathroom. This plan comes with your color choice of Welcoming tile at entry, kitchen, bathrooms and laundry, Kohler plumbing features, and much more!

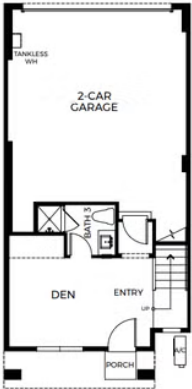
Rows Plan 2 - A TruFlex Design

ROWS AT ZEST



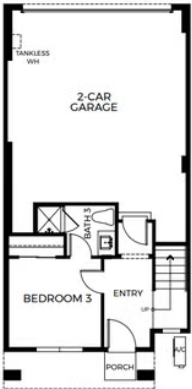
ROWS - TRUFLEX PLAN 2
Floor 1 Design Layout
Three-Story | Approx. 1,672 Sq. Ft.
1 - 5 Bedrooms | 2.5 - 4 Baths | 2-Car Garage

PRELIMINARY



FIRST FLOOR
1A

OR



FIRST FLOOR
1B

SALES GALLERY | 671 Limoncello Lane, Covina, CA 91723 | VIP-Zest.com
Sales@TrumarkHomes.com | (626) 603-5476



This is not an offer to sell but is intended for information only. The developer reserves the right to make modifications in materials, specifications, plans, pricing, various fees, designs, scheduling, and delivery of homes without prior notice. All dimensions and square footages are approximate. Plan and dimensions may contain minor variations from floor to floor. CalDRE license #01877720.

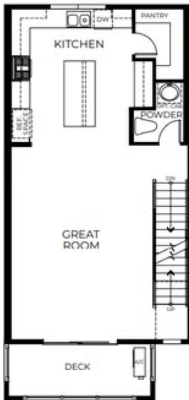
Rows Plan 2 - A TruFlex Design

ROWS AT ZEST



ROWS - TRUFLEX PLAN 2
Floor 2 Design Layout
Three-Story | Approx. 1,672 Sq. Ft.
1 - 5 Bedrooms | 2.5 - 4 Baths | 2-Car Garage

PRELIMINARY



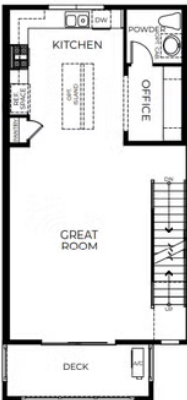
SECOND FLOOR
2A

OR



SECOND FLOOR
2B

OR



SECOND FLOOR
2C

SALES GALLERY | 671 Limoncello Lane, Covina, CA 91723 | VIP-Zest.com
Sales@TrumarkHomes.com | (626) 603-5476



This is not an offer to sell but is intended for information only. The developer reserves the right to make modifications in materials, specifications, plans, pricing, various fees, designs, scheduling, and delivery of homes without prior notice. All dimensions and square footages are approximate. Plan and dimensions may contain minor variations from floor to floor. CalDRE license #01877720.

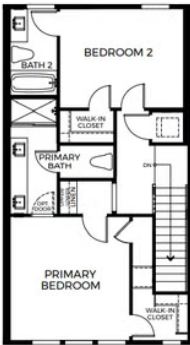
Rows Plan 2 - A TruFlex Design

ROWS AT ZEST



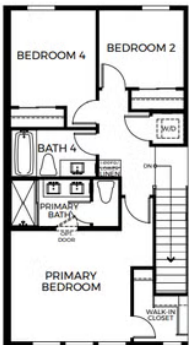
ROWS - TRUFLEX PLAN 2
Floor 3 Design Layout
Three-Story | Approx. 1,672 Sq. Ft
1 - 5 Bedrooms | 2.5 - 4 Baths | 2-Car Garage

PRELIMINARY



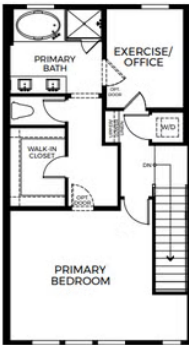
THIRD FLOOR
3A

OR



THIRD FLOOR
3B

OR



THIRD FLOOR
3C



SALES GALLERY | 671 Limoncello Lane, Covina, CA 91723 | VIP-Zest.com
Sales@TrumarkHomes.com | (626) 603-5476



This is not an offer to sell but is intended for information only. The developer reserves the right to make modifications in materials, specifications, plans, pricing, various fees, designs, scheduling, and delivery of homes without prior notice. All dimensions and square footages are approximate. Plan and dimensions may contain minor variations from floor to floor. CalDRE license #01877220.