

1195 Pioneer Drive W

MADERA, CA 93636



PRICE
\$603,431

PLAN
Hayden

LOCATION
Artisan at Riverstone

FEATURES

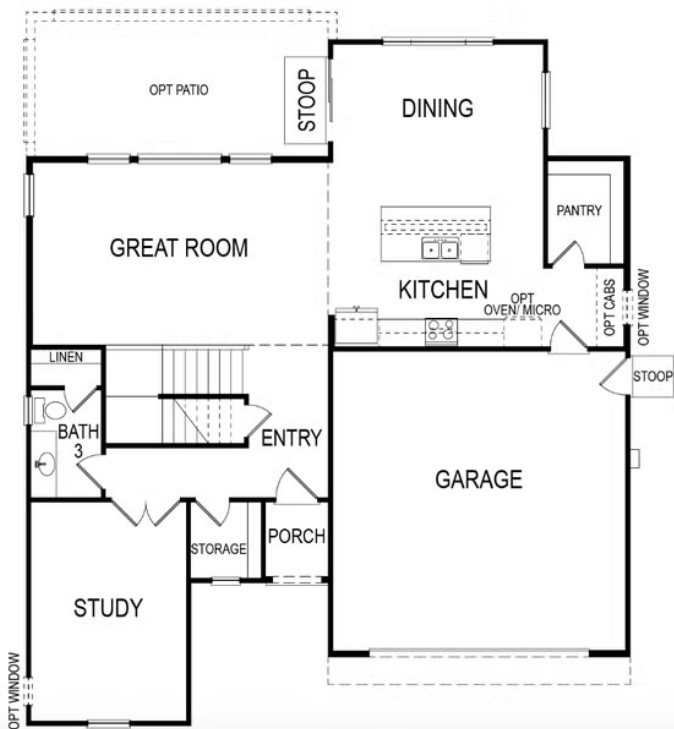
-  3 Bedrooms
-  2.5 Bathrooms
-  2,371 Sq. Ft.
-  2 Car Garage

REPRESENTATIVE PHOTOS ADDED. Homesite 509 is a Hayden plan at Artisan at Riverstone, a sophisticated two-story featuring an open design and plenty of room for the family. This plan features a 4th bedroom, on the first floor just off the entryway. The expansive great room is open to the kitchen and dining room. The kitchen details include Brushed Nickel finishes, stainless steel appliances, Onyx shaker cabinets, and quartz counter tops. To the right of the dining area is a sliding glass door leading to the covered patio, perfect for summer nights. Upstairs are additional bedrooms, a centrally located laundry room and a loft. The owner's suite, also on the second floor, comes complete with dual sink vanities, a separate soaking tub and shower and a large walk-in closet.

1195 Pioneer Drive W

MADERA, CA 93636

First Floor / Second Floor



1195 Pioneer Drive W

MADERA, CA 93636

First Floor / Second Floor

