

Plan 1

KITCHEL LAKE



PRICE

\$695,000

FEATURES

-  3 Bedrooms
-  2 Bathrooms
-  2,016 Sq. Ft.
-  3 Car Garage

Plan 1 at Kitchel Lake is a flexible single-story home offering up to 2,956 Sq. Ft. of living space with three bedrooms and two and a half baths. The home features an inviting porch with secondary bedrooms and an ensuite bathroom off the front of the home. One of these bedrooms can be replaced with a second office/flex room space. Past the entrance hall is the gourmet kitchen, featuring a spacious walk-in pantry and a center preparation island. The island overlooks the dining and great rooms with an optional gas fireplace. The kitchen includes 42" deluxe cabinetry, granite countertops with tile backsplash, stainless steel appliance package with a 5-burner gas cooktop, a convection oven, a built-in microwave, and a dishwasher.

The great room opens up to the covered outdoor room. The primary suite, located just off the great room offers a contemporary, spa-like bathroom with dual sinks, a walk-in shower, and an optional freestanding tub. An expansive walk-in closet completes the primary suite.

The optional finished basement comes with an additional secondary bedroom. Additional basement options are also available including an optional wet bar for easy entertaining, and a walk-out staircase leading to the covered outdoor room above. The home comes with extensive plank laminate flooring in the entry and kitchen, luxurious carpet in bedrooms, deluxe primary shower tile with mosaic tile shower pan, spacious 9 or 10-foot ceilings, insulated steel garage door, tankless water heater and AC, and much more!

Plan 1

KITCHEL LAKE

KITCHEL LAKE PLAN 1 FLOOR PLAN



PLAN 1

3 - 4 Bedrooms • 2.5 - 3.5 Baths • 3-Car Garage
Approx. 2,016 - 2,956 Finished Sq. Ft.

PRELIMINARY



Elevation 1A - Modern Farmhouse



Elevation 1B - Modern Prairie



Elevation 1C - Modern Mountain



All information is for reference only. Prices, taxes and specifications subject to change and should be verified by all potential homebuyers. This is not an offer to sell but is intended for information only. The developer reserves the right to make modifications in materials, specifications, plans, pricing, various fees, designs, scheduling and delivery of homes without prior notice. All dimensions and square footages are approximate. Plan and dimensions may contain minor variations from floor to floor. CA DRE license no. 01877720. (2)

VIP-KITCHEL.COM

Plan 1
KITCHEL LAKE

KITCHEL LAKE PLAN 1 FLOOR PLAN



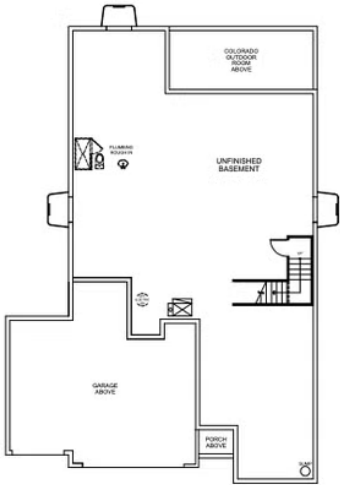
PLAN 1

3 - 4 Bedrooms • 2.5 - 3.5 Baths • 3-Car Garage
Approx. 2,016 - 2,956 Finished Sq. Ft.


PRELIMINARY



FIRST FLOOR



BASEMENT

 All information is for reference only. Prices, taxes and specifications subject to change and should be verified by all potential homebuyers. This is not an offer to sell but is intended for information only. The developer reserves the right to make modifications in materials, specifications, plans, pricing, various fees, designs, scheduling and delivery of homes without prior notice. All dimensions and square footages are approximate. Plan and dimensions may contain minor variations from floor to floor. CA DRE license no. 01877720. (a)

VIP-KITCHEL.COM

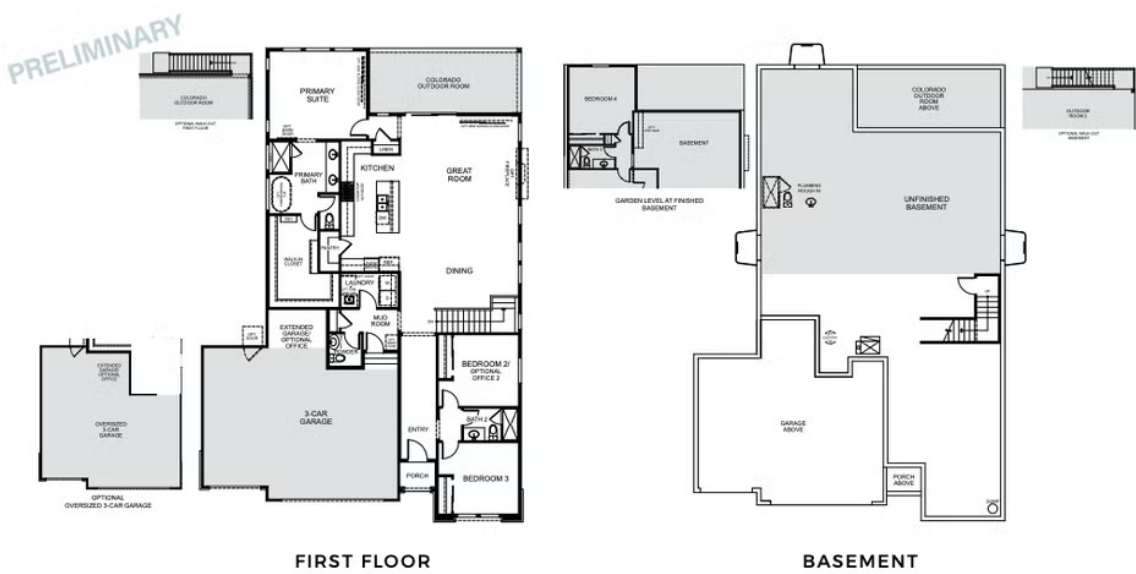
Plan 1
KITCHEL LAKE

KITCHEL LAKE PLAN 1 FLOOR PLAN



PLAN 1 - OPTIONS

3 - 4 Bedrooms • 2.5 - 3.5 Baths • 3-Car Garage
Approx. 2,016 - 2,956 Finished Sq. Ft.





VIP-KITCHEL.COM

All information is for reference only. Prices, taxes and specifications subject to change and should be verified by all potential homebuyers. This is not an offer to sell but is intended for information only. The developer reserves the right to make modifications in materials, specifications, plans, pricing, various fees, designs, scheduling and delivery of homes without prior notice. All dimensions and square footages are approximate. Plan and dimensions may contain minor variations from floor to floor. CA DRE license no. 01877720. (2)

Plan 1

KITCHEL LAKE

KITCHEL LAKE PLAN 1 FLOOR PLAN

Plan 1

KITCHEL LAKE

KITCHEL LAKE PLAN 1 FLOOR PLAN