

1304 Alyssa Drive

TIMNATH, CO 80547



PRICE

\$899,900

PLAN

Plan 4

LOCATION

Kitchel Lake


FEATURES

-  5 Bedrooms
-  4.0 Bathrooms
-  2,968 Sq. Ft.
-  4 Car Garage

Lot 14, a Plan 4 at Kitchel Lake, is a contemporary two-story home offering up to 3,438 sq. ft. of living space with 5 bedrooms and 4 baths. Off the entrance hall and foyer is a main floor secondary bedroom and bath as well as great room with fireplace and charming flex office. Beyond is the gourmet kitchen featuring a spacious walk-in pantry, ample storage, and a center preparation island that overlooks the dining and great rooms. The kitchen includes 42" deluxe shaker style cabinetry in a Dusk finish, Carrara Mist Quartz countertops with tile backsplash, stainless steel appliance package with a 5-burner gas cooktop, a convection oven, a built-in microwave, and a dishwasher. This room connects to the large Colorado outdoor room with a large sliding glass door, making entertaining a breeze.

Upstairs you'll find a multi-functional flex room, a private ensuite, and two additional secondary bedrooms with a shared bath, and a laundry room with sink. The primary suite offers a luxurious, spa-like bathroom with dual sinks, a free-standing tub, an oversized walk-in shower, and an expansive walk-in closet. The home also includes water-resistant 7" plank flooring in the entry, kitchen, dining and great room, luxurious carpet in bedrooms, spacious 10-foot ceilings on the main floor with 9-foot ceilings upstairs, tankless water heater and AC, insulated steel garage door, and much more. Contact us today to find more about this move-in ready home!

KITCHEL LAKE PLAN 4 FLOOR PLAN




PLAN 4 - OPTIONS

5 - 6 Bedrooms - 4 - 5 Baths - 4-Car Garage (Tandem)
Approx. 2,968 - 3,870 Finished Sq. Ft.

PRELIMINARY



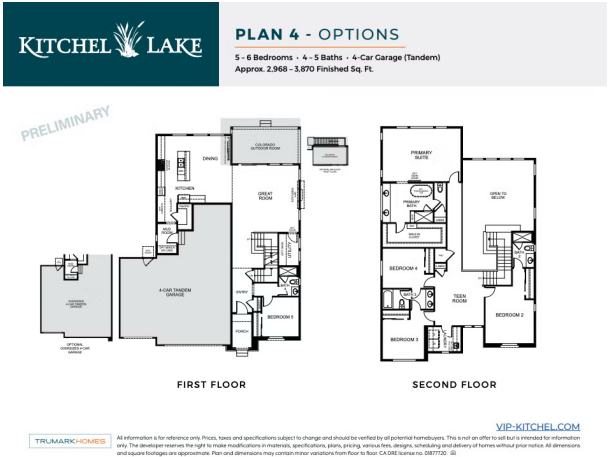
BASEMENT OPTION 3



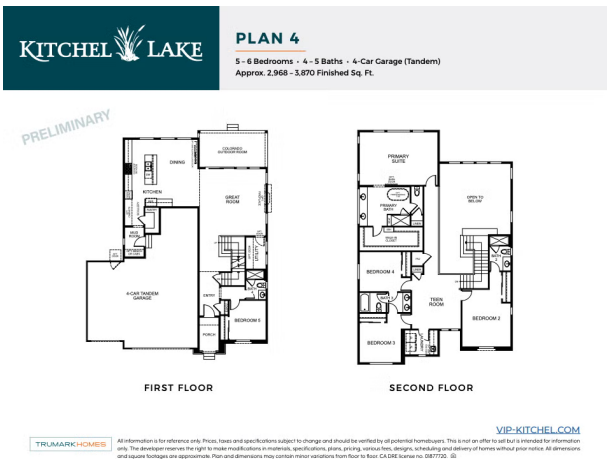
All information is for reference only. Prices, fees and specifications subject to change and should be verified by all potential homebuyers. This is not an offer to sell but is intended for information only. The developer reserves the right to make modifications in materials, specifications, plans, pricing, schedule, design, scheduling and delivery of homes without prior notice. All dimensions and square footages are approximate. Plan and dimensions may contain minor variations from those in prior CD/CR drawings. 08/17/22. ©

VIP-KITCHEL.COM

KITCHEL LAKE PLAN 4 FLOOR PLAN



KITCHEL LAKE PLAN 4 FLOOR PLAN



TRUMARKHOMES

1304 Alyssa Drive

TIMNATH, CO 80547

GET IN TOUCH
(970) 499-8222

KITCHEL LAKE PLAN 4 FLOOR PLAN

