

# Plan 5

## KITCHEL LAKE



### PRICE

**\$720,000**

### FEATURES

-  3 Bedrooms
-  2 Bathrooms
-  2,268 Sq. Ft.
-  3 Car Garage

Plan 5 at Kitche Lake is a contemporary two-story home offering up to 3,079 Sq. Ft. of living space with 3 bedrooms and 2.5 baths. The home features an inviting porch with an office and powder room off the front of the home. Beyond the entrance hall and foyer is the gourmet kitchen featuring a spacious walk-in pantry, ample storage, and a center preparation island that overlooks the dining and great rooms. The kitchen includes 42" deluxe cabinetry, granite countertops with tile backsplash, stainless steel appliance package with a 5-burner gas cooktop, a convection oven, a built-in microwave, and a dishwasher. This room connects to the large Colorado outdoor room for easy entertaining. Customize your basement, with options for a media room with an optional wet bar, as well as a fourth bedroom and bathroom.

Upstairs you'll find a multi-functional teen room, two secondary bedrooms, and a laundry room with an optional sink. The primary suite offers a luxurious, spa-like bathroom with dual sinks, a walk-in shower, and an expansive walk-in closet.

The home comes with water-resistant laminate flooring in the entry and kitchen, luxurious carpet in bedrooms, finished basement, spacious 9 or 10-foot ceilings, tankless water heater and AC, insulated steel garage door, and much more!

## KITCHEL LAKE PLAN 5 FLOOR PLAN

# KITCHEN LAKE

## PLAN 5

3 - 4 Bedrooms • 2.5 - 3.5 Baths • 2-Car Garage  
Approx. 2,268 - 3,079 Finished Sq. Ft.

PRELIMINARY

FIRST FLOOR

SECOND FLOOR

TRIMARK HOMES

All information is for reference only. Prices, taxes and specifications subject to change and should be verified by all potential homebuyers. This is not an offer to sell but is provided for information only. The developer reserves the right to make modifications in materials, specifications, plans, pricing, salesmen, designs, including and delivery of homes without prior notice. All dimensions and lot/acreage bearings are approximate. Plans and dimensions are current when registered but are not to be used as a basis for construction. (08/27/22, 23)

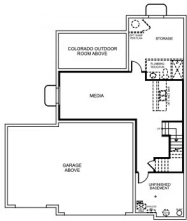
[VIP-KITCHEN.COM](http://VIP-KITCHEN.COM)

KITCHEL LAKE PLAN 5 FLOOR PLAN



**PLAN 5**  
3 - 4 Bedrooms • 2.5 - 3.5 Baths • 3-Car Garage  
Approx. 2,268 - 3,079 Finished Sq. Ft.

PRELIMINARY



BASEMENT



All information is for reference only. Prices, fees and specifications subject to change and should be verified by all potential homebuyers. This is not an offer to sell but is intended for information only. The developer reserves the right to make modifications in materials, specifications, plans, pricing, without fees, designs, scheduling and delivery of homes without prior notice. All dimensions and square footages are approximate. Plan and dimensions may contain minor variations from floor to floor. ©2020 Trumark Homes. 08/17/2020. 00

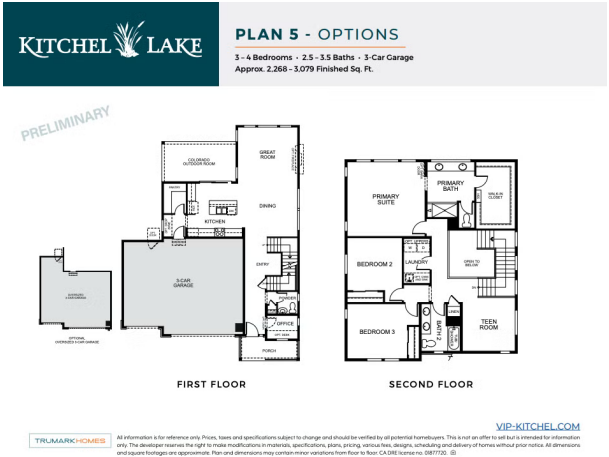
[VIP-KITCHEL.COM](http://vip-kitchel.com)

Plan 5

KITCHEL LAKE

GET IN TOUCH  
(970) 499-8222

KITCHEL LAKE PLAN 5 FLOOR PLAN



# Plan 5

KITCHEL LAKE

## KITCHEL LAKE PLAN 5 FLOOR PLAN

# Plan 5

KITCHEL LAKE

## KITCHEL LAKE PLAN 5 FLOOR PLAN