

1328 Alyssa Drive

TIMNATH, CO 80547



PRICE

\$854,679

PLAN

Plan 5

LOCATION

Kitchel Lake

FEATURES

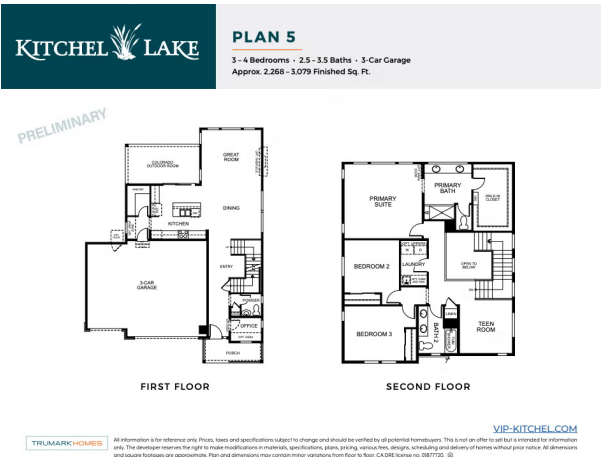
-  4 Bedrooms
-  3.5 Bathrooms
-  2,268 Sq. Ft.
-  3 Car Garage

Lot 10, a Plan 5 at Kitchel Lake, is a contemporary two-story home offering up to 3,079 of finished sq. ft. with 4 bedrooms and 3.5 baths. The home features an inviting porch with an office and powder room off the front of the home. Beyond the entrance hall and foyer is the gourmet kitchen featuring a spacious walk-in pantry, ample storage, and a center preparation island that overlooks the dining and great rooms. The kitchen includes 42" deluxe cabinetry with a darker stain, marbled Quartz countertops with tile backsplash, stainless steel appliance package with a 5-burner gas cooktop, a convection oven, a built-in microwave, and a dishwasher. This room connects to the large Colorado outdoor room for easy entertaining.

Upstairs you'll find a multi-functional flex room, two secondary bedrooms, and a laundry room with a sink and cabinets. The primary suite offers a luxurious, spa-like bathroom with dual sinks, a walk-in shower, and an expansive walk-in closet. The finished basement features a bedroom, bath and rec room.

The home comes with water-resistant laminate flooring in the entry and kitchen, luxurious carpet in bedrooms, finished basement, spacious 9 or 10-foot ceilings, tankless water heater and AC, insulated steel garage door, and much more!

KITCHEL LAKE PLAN 5 FLOOR PLAN



KITCHEL LAKE PLAN 5 FLOOR PLAN



PLAN 5


3 - 4 Bedrooms • 2.5 - 3.5 Baths • 3-Car Garage

Approx. 2,268 - 3,079 Finished Sq. Ft.

PRELIMINARY



BASEMENT



All information is for reference only. Prices, fees and specifications subject to change and should be verified by all potential homebuyers. This is not an offer to sell but is intended for information only. The developer reserves the right to make modifications in materials, specifications, plans, pricing, without fees, designs, scheduling and delivery of homes without prior notice. All dimensions and square footages are approximate. Plan and dimensions may contain minor variations from floor to floor. ©2020 Trumark Homes. 08/17/20. 01

VIP-KITCHEL.COM

KITCHEL LAKE PLAN 5 FLOOR PLAN



TRUMARKHOMES All information is for reference only. Plans, fees and specifications subject to change and should be verified by all potential homeowners. This is not an offer to sell but is intended for information only. The developer reserves the right to make modifications in materials, specifications, plans, pricing, virtual tour, design, scheduling and delivery of homes without prior notice. All dimensions and square footages are approximate. Plan and dimensions may contain minor variations from those in New CO 2020 Uniform Code (2020) (2).

VIP-KITCHEL.COM

TRUMARKHOMES

1328 Alyssa Drive

TIMNATH, CO 80547

GET IN TOUCH
(970) 499-8222

KITCHEL LAKE PLAN 5 FLOOR PLAN



TRUMARKHOMES

1328 Alyssa Drive

TIMNATH, CO 80547

GET IN TOUCH
(970) 499-8222

KITCHEL LAKE PLAN 5 FLOOR PLAN

